



INTRODUCING OUR NEW GARMENT ROD COLLECTION

Frank Allart have developed a full collection of Garment Rods (Valet Rods) using Select and Precision Rosettes, along with the clients choice of pull knobs from our cabinet collection.

Available in over 30 finishes which can be mixed and matched as desired, offering thousands of combinations.



- PULL KNOBS - over 30 designs in two diameters 32mm (1¼") and 38mm (1½").
- ROSETTES - over 20 round Rosette designs in four diameters from 44mm (1¾") upwards plus also square, octagonal and rectangular plates coming soon!
- RODS - available in two lengths 150mm (6") and 200mm (8").
- FINISHES* - over 30 standard finishes which can be mixed and matched across the product as desired.

[See all Knobs, Rosettes and finishes on next pages >](#)

* Please note: some finishes might wear depending on the type of finish, please contact the sales team for advice/further information.

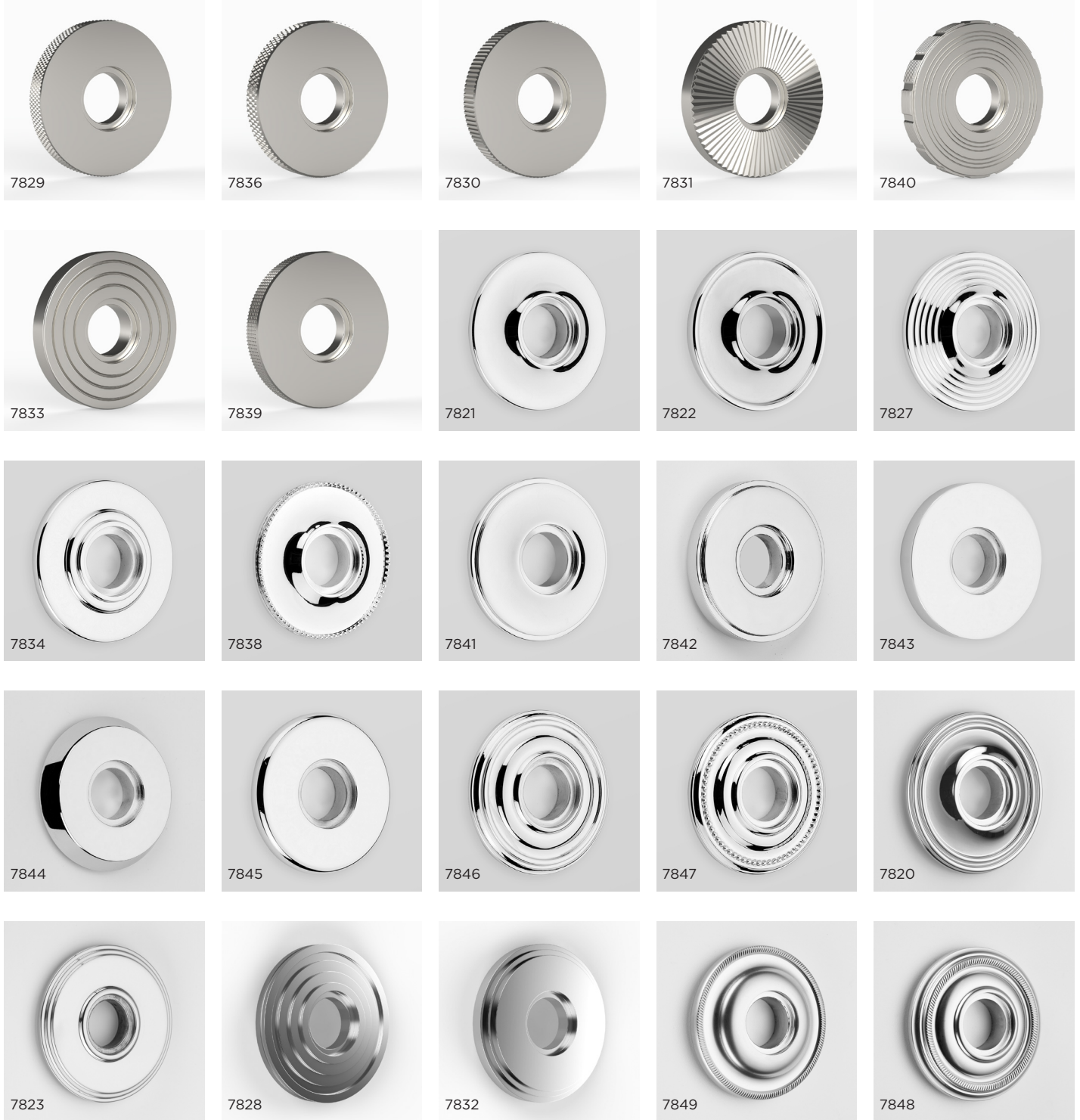


GARMENT ROD KNOBS





GARMENT ROD ROSETTES



GARMENT RODS



Available in two hanging lengths (L) - 150mm (6") and 200mm (8").

Makers of fine English hardware



GARMENT ROD FINISHES



Ebony Bronze (EBB)



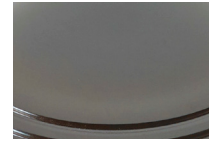
Dark Matt Bronze (DMB)



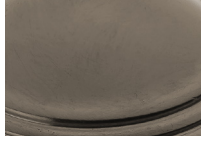
Chestnut Bronze (CHB)



Hand Burnished Brass (HBB)



Imperial Brass Lacquered (IB)



Imperial Brass (IBU)



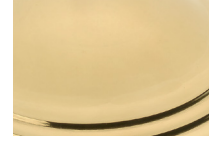
Antique Brass Lacquered (AB)



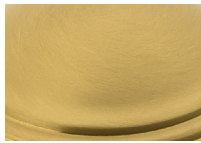
Antique Brass (ABU)



Polished Brass Lacquered (PB)



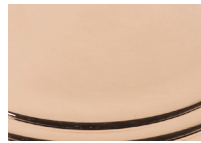
Polished Brass (PBU)



Satin Brass Lacquered (SB)



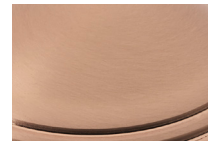
Satin Brass (SBU)



Polished Copper Lacquered (PK)



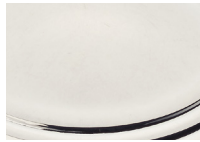
Polished Copper (PKU)



Satin Copper Lacquered (SK)



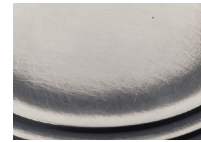
Satin Copper (SKU)



Polished Silver (SP)



Butlers Silver (BS)



Antique Silver (AS)



Hand Burnished Nickel (HBN)



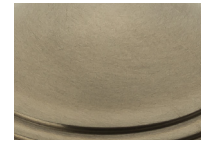
Satin Nickel (SN)



Polished Nickel (PN)



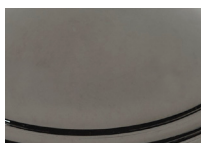
Pearl Nickel (PRL)



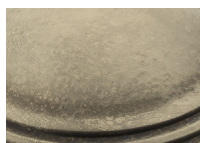
Satin Nickel Bronzed (SNB)



Matt Black Nickel (MBN)



Polished Black Nickel (PBN)



Antique Nickel (AN)



Antique Nickel Distressed (AND)



Polished Chrome (PC)



Satin Chrome (SC)



Pearl Chrome (PRC)



Matt Black Chrome (MBC)



Rose Gold (GRS)



Hand Burnished Bronze (HBG)



Polished Solid Bronze (PGU)



Satin Solid Bronze (SGU)



Polished Solid Bronze Antiqued (PGA)



Satin Solid Bronze Antiqued (SGA)



Rustic Solid Bronze (RG)



Rustic Solid Bronze Dark (RGD)

Please note: colour and texture variation is inherent in the creation of all our hand finished patinas and finishes, product appearances may vary to the images shown. Actual swatch samples are available upon request.